



### AML22CBF2AA



**AML22 Series, Electronic Control Pushbutton, Square, Standard Bezel, Lighted, 1 LED, SPDT, Momentary Action, Snap in panel mount**

#### Features

- Identical to AML21 switches, except furnished with high efficiency LED display.
- Rectangular LED•s are flush with button surface, providing wide angle indication.
- Optional diode protection for LED•s.
- 5 thru 24 Vdc LED devices have an internal resistor to maintain current at nominal 20 mA.
- UL recognized, CSA certified.
- LED circuit independent of switch circuit.

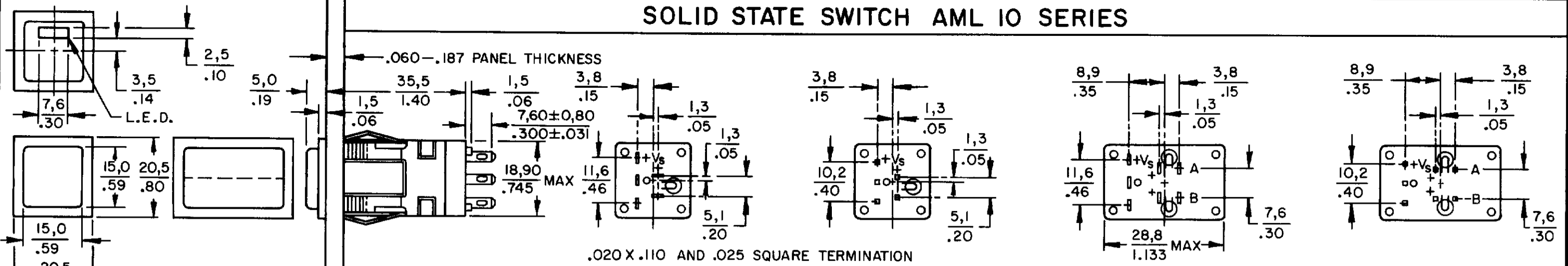
#### Notice

Button caps for MICRO SWITCH™ AML Pushbuttons are sold separately. Please see the links at the left for information on the buttons caps and other AML accessories.

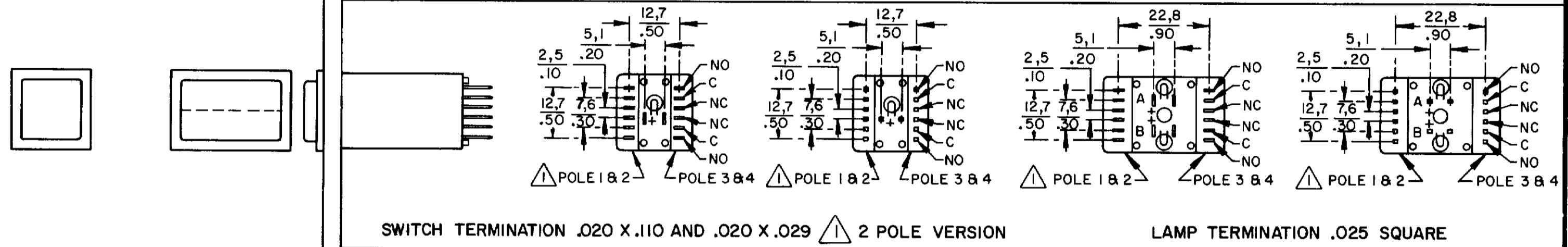
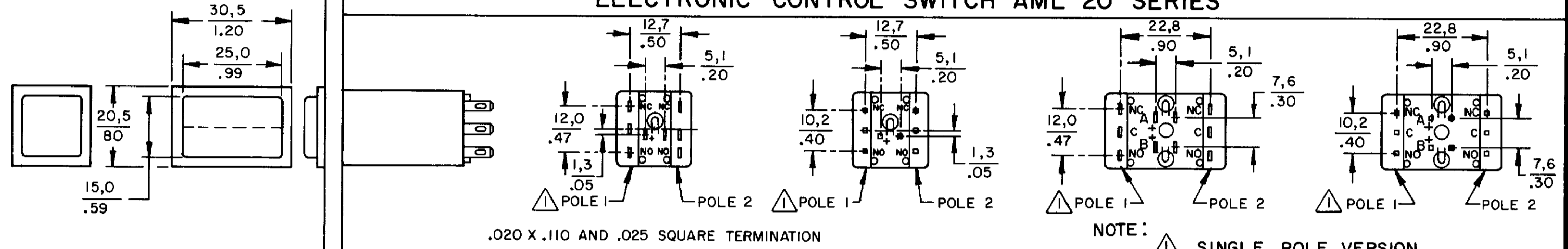
Product Specifications	
Product Type	MICRO SWITCH™ Pushbutton
Housing Type	Square
Circuitry	SPDT
Action	Momentary Action
Mounting	Snap-in Panel
Lamp Type	Lighted, 1 LED
Termination	.110 x .020 (Solder or Quick-Connect)
Ampere/Voltage Range (Resistive Load)	0.4-2 A @ 0.5 -250 Vac, 0.4-2 A @ 0.5-30 Vdc, 0.4-3 A @ 0.5-125 Vac
LED/Lamp/Neon Voltage	24 V
LED/Neon Color	Red
Comment	use AML52 button
<b>Availability</b>	<b>Global</b>
<b>UNSPSC Code</b>	<b>30211913</b>
<b>UNSPSC Commodity</b>	<b>30211913 Push button switches</b>
<b>Series Name</b>	<b>AML22</b>

# AML PUSHBUTTON AND INDICATOR SERIES

## SOLID STATE SWITCH AML 10 SERIES

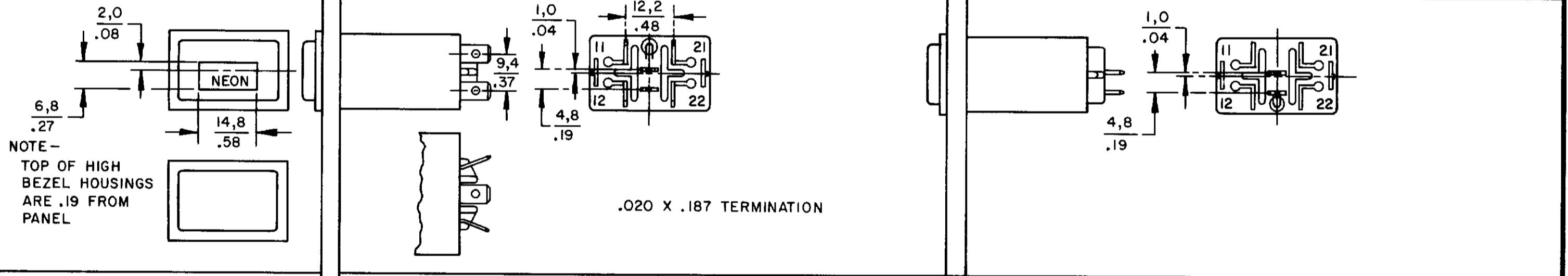


## ELECTRONIC CONTROL SWITCH AML 20 SERIES

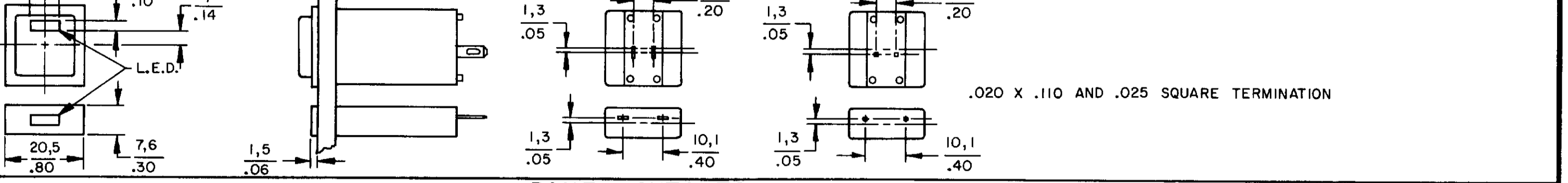
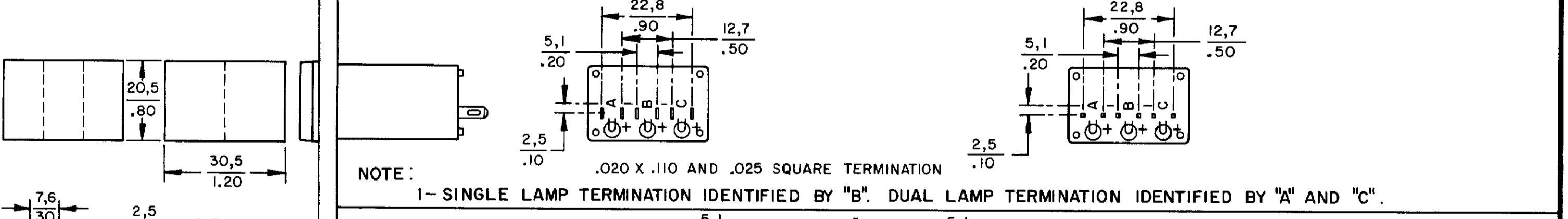
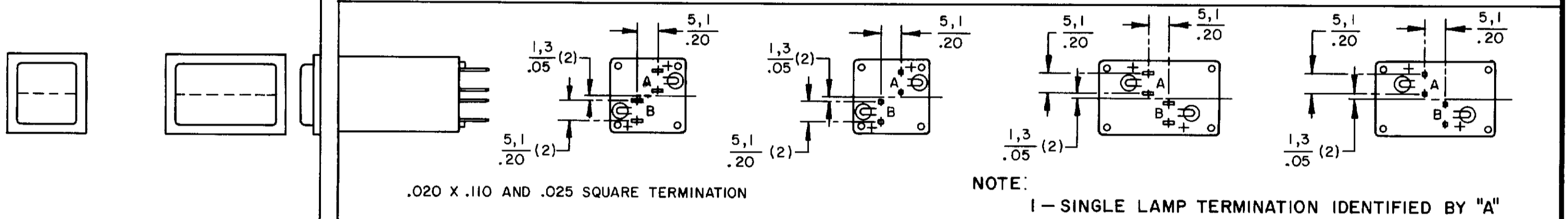


## POWER SWITCH AML 30 SERIES

## LINE POWER IND AML 43 SERIES



## INDICATORS AML 40 SERIES

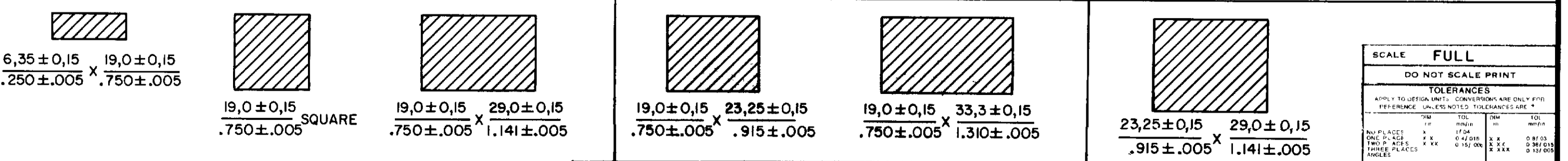


## PANEL CUTOUTS

### WITHOUT BARRIERS

### SHORT BARRIER

### LONG BARRIER



SCALE FULL	
DO NOT SCALE PRINT	
TOLERANCES	
APPLY TO DESIGN UNITS. CONVERSIONS ARE ONLY FOR REFERENCE. UNLESS NOTED, TOLERANCES ARE:	
INCHES	FRACTIONS
NO PLACES	± .005
ONE PLACE	± .001
TWO PLACES	± .0005
THREE PLACES	± .0002
ANGLES	± .001
DESIGN UNITS	DI METRIC <input checked="" type="checkbox"/> US CUSTOMARY <input type="checkbox"/>
THIRD ANGLE PROJECTION	
WEIGHT	

CATALOG LISTING AML 10 20 30 40  
 PAGE 1 OF 1 SERIES CHART 1  
 RELEASE NO CO-78498 REPLACES & 40 SERIES  
 ISSUE 6  
 REVISIONS:  
 A 209297 6 J W 8 JUL 89  
 B 201477 6 J W 9 OCT 00  
 C 201566 C S L 20 OCT 00  
 D 201696 D J V 00  
 E 202971 C S L 30 APR 01  
 DRAWN JAK 17 JUN 94 CHECK JAF 11 JUL 04  
 RASTER